

**Food Makers Bakery Equipment**



**NEW & RE-MANUFACTURED EQUIPMENT**

# **BAKERY EQUIPMENT**

**Services And Solutions For The Modern Baker!**



**626-358-1343 • [www.FMBE.com](http://www.FMBE.com)**



# 30 YEARS OF SERVING THE BAKING INDUSTRY



**We Are Committed To Deliver The Finest Equipment, Services And Solutions For The Modern Baker.**

**With A Staff Of 50 People, We Are Here To Help Improve Your Productivity.**

**The Work Ethic And High Standards Of Our Team Members Have Made Our Company An Industry Leader For Over 30 Years**



## DIRECTORY

**NEW EQUIPMENT**

**REMANUFACTURED EQUIPMENT**

**PARTS & SERVICES**

**MANUFACTURED GOODS**





# MIXERS

Respected For Their Quality And Durability, Sottoriva Manufactures Machines With The Baker In Mind. These Machines Are Easy To Use And Easy To Maintain.

Food Makers Bakery Is A Proud Sottoriva Brand Distributor For Over 15 years.

NEW EQUIPMENT



## **TWIST SPIRAL MIXER**

• 130 - 660 Pound Dough Capacity



## **EVO REMOVABLE BOWL SPIRAL MIXER**

• 285 - 660 Pound Dough Capacity



## **PRISMA TWIST SELF-TILTING SPIRAL MIXER**

• 285 - 660 Pound Dough Capacity



## **IBT2 - 3 DOUBLE ARM MIXER**

• 110 - 175 Pound Dough Capacity



## **IBT4-5-6-7/M DOUBLE ARM MIXER**

• 265 - 705 Pound Dough Capacity

VISIT OUR YOUTUBE VIDEOS FOR MORE INFORMATION @ [YOUTUBE.COM/FMBE](https://www.youtube.com/fmbe)

Food Makers Bakery Equipment • 626-358 - 1343 • [www.FMBE.com](http://www.FMBE.com) • [sales@fmbe.com](mailto:sales@fmbe.com)







# OVENS & PROOFERS

## THE ULTIMATE RACK OVEN



### New G-5 Series

- Fastest Recovery Of Any Oven On The Market
- Most Steam Volume
- Most Precise Air Movement For Less Cake Crowning
- Energy Star Approved The Most Gas Efficient Oven

### New For 2017!

- Optional **VARIABLE FAN SPEED CONTROL**
- Best For Precise Cake And Sweet Goods Baking
- You Control The Fan Speed For Perfect Baking

Visit Our Website To See Our Extensive Users List  
Unbelievable List Of Satisfied Customers!



### ROLL-IN & PASS THROUGH PROOFERS AND RETARDERS

- Industrial Quality, All Stainless Steel
- Perfect Heat And Humidity, No Cold Spots
- Larger Pass-Through Sizes Up To 18 Double Oven Racks



### DECK OVENS

- Independent Temperature And Steam Controls For Each Deck
- Available in 2, 3, And 4 Deck Sizes

### LMO-MAX



### MINI RACK OVEN



### MINI-OVENS

16 PANS

8 PANS

**THE SAME GREAT BAKE QUALITIES AS THE LBC DOUBLE OVEN RACK!**

NEW EQUIPMENT



VISIT OUR YOUTUBE VIDEOS FOR MORE INFORMATION @ [YOUTUBE.COM/FMBE](https://www.youtube.com/fmbe)

Food Makers Bakery Equipment • 626-358 - 1343 • [www.FMBE.com](http://www.FMBE.com) • [sales@fmbe.com](mailto:sales@fmbe.com)





# METERS & CHILLERS

## STM DOX-30M

- For Artisan And Wholesale Bakers
- Last Settings Are Always Kept In Memory



## STM DOX-35/45

- Temperature Adjusting
- Hold Up To 80 Recipes



## JAC Levain System

- Perfect Sourdough Fermentation
- Sizes From 40 to 220 Quarts



## AQUA Water Chillers

- Sizes Up To 400 Gallons Per Hour



# EGG WASH & PAN GREASING



FOOD MAKERS

## AUTOMATIC EGG WASHER

- Perfect Results!
- Also Can Be Used As A Pan Greaser



FOOD MAKERS

## AUTOMATIC PAN GREASER

- Also Available In Wide Pan Widths



FOOD MAKERS

## GRAVITY FEED PAN GREASER

- Precise Greasing At An Economy Price

**VISIT OUR WEBSITE PANGREASERS.COM  
FOR VIDEOS, PRICING & MORE INFO**

VISIT OUR YOUTUBE VIDEOS FOR MORE INFORMATION @ [YOUTUBE.COM/FMBE](https://www.youtube.com/fmbe)

Food Makers Bakery Equipment • 626-358 - 1343 • [www.FMBE.com](http://www.FMBE.com) • [sales@fmbe.com](mailto:sales@fmbe.com)





# DOUGH MAKE-UP

**JAC**



## UNIC Baguette Moulder

- 3 Rollers For Perfect Sheeting
- All Stainless Steel Finish



## DIV-R (Square) Hydraulic Divider

- 10 to 20 Cuts
- Up To 4 Lb. Cut Pieces



## DIV (Round) Hydraulic Divider

- 16 to 20 Divisions
- Cuts Weights From 4 Ounces to 3 Pounds



## C-40 MOULDER

- 4 Moulding Sheetters For Perfect Hoagies, And Sub Rolls

**sottoriva**

## INDUSTRIAL FRENCH BREAD MOULDER

- Conveyor In-Feed
- Automatic In-Feed For Integration With Bread Systems



**ER** ERIKA RECORD LLC  
BAKING EQUIPMENT



## EASY AUTO PLUS

- Automatic Cutting
- No Pressing By Operator
- Removable Heads For Largest Rounding Range Of .75 to 9 Ounces

## SEMI

- Semi-Automatic Cutting
- 36 Parts
- Range Of 1 To 4 Ounces



## WINNER-S

- Automatic Hoagie And Sub Roll Production For The Craft Baker
- Automatically Cuts, Sheets And Rolls

VISIT OUR YOUTUBE VIDEOS FOR MORE INFORMATION @ [YOUTUBE.COM/FMBE](https://www.youtube.com/fmbe)

Food Makers Bakery Equipment • 626-358 - 1343 • [www.FMBE.com](http://www.FMBE.com) • [sales@fmbe.com](mailto:sales@fmbe.com)

NEW EQUIPMENT





# DIVIDERS & ROUNDERS

## SP/240 STRESS FREE CIABATTA DIVIDER

- Divides The Softest Sticky Ciabatta Doughs
- Standard With 4 Cutting Knives For Largest Range Of Shapes And Weights



## ATHENA DIVIDER ROUNDER

- High Output Capable of 4,5 Or 6 Rows



## DINAMICA DIVIDER ROUNDER

- Perfect For Soft Brioche
- Largest Range:  
3/4 ounce to 6 ounces



- THE MOST EXTENSIVE RANGE OF ROLL MACHINES ON THE MARKET TODAY
- LARGEST SCALING RANGE FROM 3/4 OZ. TO OVER 6 OZ.

**CALL FOR MORE INFO TODAY!**

## ATHENA LARGE PLUS

- Low Stress For Softer Doughs
- Up To 13,500 Pcs. Per Hour



## SVP08 PISTON AUTOMATIC DIVIDER

- Weight Range Adjustable With Rotating Hand-Wheel



## LYRA DIVIDER ROUNDER

- Up to 5 Ounce Scaling Range
- Up To 3000 Pcs. Per Hour



## ASR CONICAL ROUNDER

- Designed For Rounding Soft And/Or Non-Standard Dough
- Weight Range 30 - 1400 Grams



VISIT OUR YOUTUBE VIDEOS FOR MORE INFORMATION @ [YOUTUBE.COM/FMBE](https://www.youtube.com/fmbe)

Food Makers Bakery Equipment • 626-358 - 1343 • [www.FMBE.com](http://www.FMBE.com) • [sales@fmbe.com](mailto:sales@fmbe.com)

NEW EQUIPMENT





# BREAD & ROLL LINES

## MR8

- Ultimate Ciabatta Production
- Low Stress For Softest Doughs



• THE MOST EXTENSIVE RANGE OF DOUGH MACHINES ON THE MARKET TODAY

• LARGEST ROLL SCALING RANGE FROM 3/4 OZ. TO OVER 9 OZ.

**CALL FOR MORE INFO TODAY!**

## HI-LINE SYSTEMS

- Custom Fit To Your Specific Needs
- Speeds Up To 13,500 Pieces Per Hour

## FLEXLINE SYSTEMS

- Ultimate Roll Production
- Perfect For Hoagies, Subs, Hamburger Buns & Much More



## BREAD SYSTEMS

- Largest Scaling Range
- All Stainless Finish



VISIT OUR YOUTUBE VIDEOS FOR MORE INFORMATION @ [YOUTUBE.COM/FMBE](https://www.youtube.com/fmbe)

Food Makers Bakery Equipment • 626-358 - 1343 • [www.FMBE.com](http://www.FMBE.com) • [sales@fmbe.com](mailto:sales@fmbe.com)

NEW EQUIPMENT





# MONO DEPOSITORS



## EPSILON

- Perfect For The Retail Baker
- French Macarons, Drop Cookies And Sheet Cakes
- Easy Programming For Quick Changeover



**PERFECT DEPOSITING SINCE 1965!**

**FASTER AND EASIER TO SET UP COMPARED TO ANY OTHER DEPOSITOR MADE!**

**RUN YOUR PRODUCTS IN OUR TEST BAKERY TODAY!**



## OMEGA PLUS

- Super Fast Speeds Of 30 Rows Per Minute
- "Picture Programming" For Easy & Fast Set-Up
- Perfect For Sheet Cake Laying



## OMEGA TOUCH

- Up To 19 Rows Per Minute
- "Picture Programming" For Easy & Fast Set-Up
- Wide Range Of Attachments For Spritz And Drop Application

## OMEGA WIRE-CUT

- Perfect For Wire Cutting All Chocolate Chip, Oatmeal, Peanut Butter And Specialty Cookies.
- All The Spritz Features Of The Omega Plus



## AVAILABLE ACCESSORIES & MORE



ASSORTED NOZZLES



STANDARD TEMPLATE



SHEETING TEMPLATE



ROTARY TEMPLATE



WIRECUT TEMPLATE



INTERMEDIATE GEARS



PARTICULATE GEARS



HARD DOUGH HOPPER



SOFT DOUGH HOPPER

VISIT OUR YOUTUBE VIDEOS FOR MORE INFORMATION @ [YOUTUBE.COM/FMBE](https://www.youtube.com/fmbe)

Food Makers Bakery Equipment • 626-358 - 1343 • [www.FMBE.com](http://www.FMBE.com) • [sales@fmbe.com](mailto:sales@fmbe.com)

NEW EQUIPMENT







**TABLETOP  
SHEETERS**



**MECHANICAL SHEETERS**



**DOUGH BLOCK  
PRESS**



**ELECTRONIC SHEETERS**



  
**BAKERY & PASTRY EQUIPMENT**  
**SATELLITE SHEETING**



## **ALBA - THE FINEST PASTRY PRODUCTION!**



**MULTI FIVE LINE**

**ALBA  
PASTRY LINE**



**DOUGH BLOCK LINE**



**CROISSANT SYSTEMS**



VISIT OUR YOUTUBE VIDEOS FOR MORE INFORMATION @ [YOUTUBE.COM/FMBE](https://www.youtube.com/fmbe)

**Food Makers Bakery Equipment • 626-358 - 1343 • [www.FMBE.com](http://www.FMBE.com) • [sales@fmbe.com](mailto:sales@fmbe.com)**

**NEW EQUIPMENT**





**10.000 HORIZONTAL INDUSTRIAL SLICER**

- Perfect Cake Slabbing



**110-1 BANDS SLICER**

- Perfect Hamburger Bun Slicing



**JAC FULL**

- High Production For Artisan & Craft Bakers



**ZIP**

- Bagels & Buns



**ECO**

- Thick & Thin Slicing



**PICOMATIC 450**



**3000/5000 AUTOMATIC BUN SLICER**

- Partial Cut On 1 Or 2 Cutting Lines



**1700 BAND BLADE SLICER**

- Multi-Type Bread Slicer



- Up To 4 Layered Cuts





# REMANUFACTURING

*SERVICES*



HAVE A FAVORITE MACHINE?  
**\$AVE MONEY**  
WE CAN REMANUFACTURE  
FOR YOU

WE REBUILD TO THE  
HIGHEST QUALITY



You Tube



LEARN MORE ABOUT US  
@ [YOUTUBE.COM/FMBE](https://www.youtube.com/fmbe)



REMANUFACTURING

*SERVICES*

FOOD MAKERS  
BAKERY EQUIPMENT  
FMBE.com

Food Makers Bakery Equipment • 626-358 - 1343 • [www.FMBE.com](http://www.FMBE.com) • [sales@fmbe.com](mailto:sales@fmbe.com)

FOOD MAKERS  
BAKERY EQUIPMENT  
FMBE.com



# MIXERS

**REMANUFACTURED**

**ALL NEW MECHANICS!!**



**ALL NEW ELECTRONICS!!**



**SANCASSIANO  
Mixer**



**PEERLESS  
Horizontal Mixer**



**DIOSNA  
W401**



**LUCKS  
Tipping Mixers**



- WE HAVE A WIDE SELECTION OF MACHINES TO FIT YOUR BUDGET AND PRODUCTION REQUIREMENTS
- SEE OUR WEBSITE FOR MORE INFORMATION

- EXPERTS AT REBUILDING ALL: KEMPER, HOBART, DIOSNA, VMI, LUCKS, AMF, PEERLESS & CHAMPION MODELS
- HAVE A FAVORITE MACHINE? WE CAN FULLY REBUILD IT FOR YOU!

**You Tube**



WP - Tewimat S - Food Makers Bakery Equipment

VISIT OUR YOUTUBE VIDEOS FOR MORE INFORMATION @ [YOUTUBE.COM/FMBE](https://www.youtube.com/fmbe)

**HOBART  
80 & 140  
Quart**



**AMF  
340 Glen**



**FOOD MAKERS  
BAKERY EQUIPMENT**

[FMBE.com](http://FMBE.com)

**FOOD MAKERS  
BAKERY EQUIPMENT**

[FMBE.com](http://FMBE.com)

**FOOD MAKERS  
BAKERY EQUIPMENT**

[FMBE.com](http://FMBE.com)

Food Makers Bakery Equipment • 626-358 - 1343 • [www.FMBE.com](http://www.FMBE.com) • [sales@fmbe.com](mailto:sales@fmbe.com)

**MIXERS  
REMANUFACTURED**



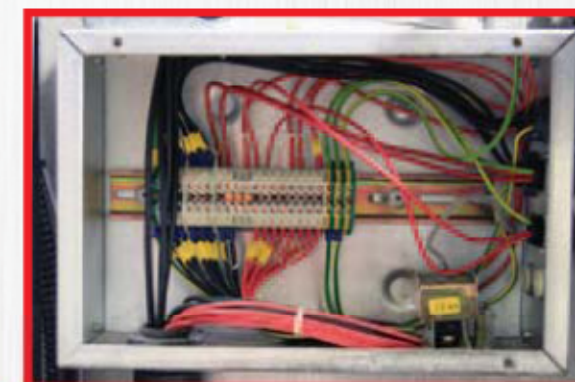
# OVENS

**REMANUFACTURED**

**ALL NEW MECHANICS!!**



**ALL NEW ELECTRONICS!!**



**HOBART**  
Rack Oven

- EXPERTS AT REBUILDING ALL: REVENT, BAXTER, LUCKS, HOBART & LBC MODELS
- HAVE A FAVORITE MACHINE? WE CAN FULLY REBUILD IT FOR YOU!



**REVENT**  
Rack Oven

- WE HAVE A WIDE SELECTION OF MACHINES TO FIT YOUR BUDGET AND PRODUCTION REQUIREMENTS
- SEE OUR WEBSITE FOR MORE INFORMATION



**BAXTER**  
Rack Oven



**LBC**  
Rack Oven



**LUCKS**  
Rack Oven

**You Tube**



WP - Towimat S - Food Makers Bakery Equipment

VISIT OUR YOUTUBE VIDEOS FOR MORE INFORMATION @ [YOUTUBE.COM/FMBE](https://www.youtube.com/fmbe)

**FOOD MAKERS  
BAKERY EQUIPMENT**

[FMBE.com](http://FMBE.com)

**REMANUFACTURED**

**FOOD MAKERS  
BAKERY EQUIPMENT**

[FMBE.com](http://FMBE.com)

Food Makers Bakery Equipment • 626-358 - 1343 • [www.FMBE.com](http://www.FMBE.com) • [sales@fmbe.com](mailto:sales@fmbe.com)

**FOOD MAKERS  
BAKERY EQUIPMENT**  
[FMBE.com](http://FMBE.com)



# ROLL MACHINES

**REMANUFACTURED**

**FOOD MAKERS  
BAKERY EQUIPMENT**

**FMBE.com**

**WP  
Multimatic  
5 Row**



**WP  
Tewimat S  
8 Row**



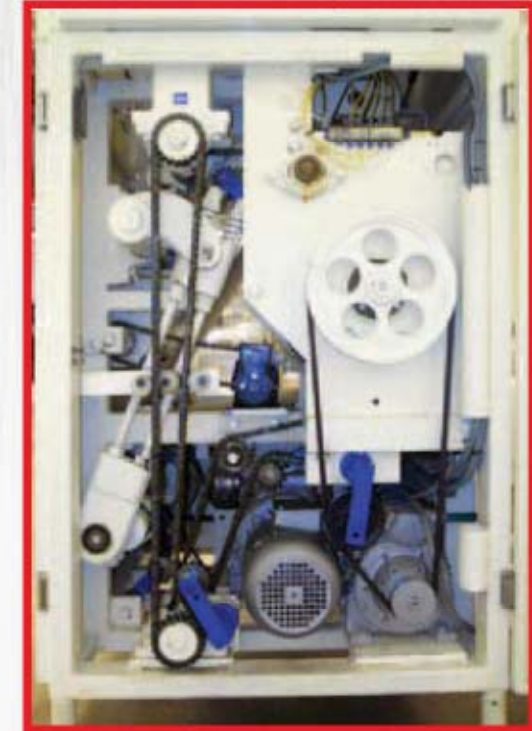
**KONIG  
4 Row**



**FORTUNA  
5 Row**



**ALL NEW MECHANICS!!**



- WE HAVE A WIDE SELECTION OF MACHINES TO FIT YOUR BUDGET AND PRODUCTION REQUIREMENTS
- SEE OUR WEBSITE FOR MORE INFORMATION

- EXPERTS AT REBUILDING ALL: KONIG, WP, KEMPER, FORTUNA, AND SOTTORIVA MODELS
- HAVE A FAVORITE MACHINE? WE CAN COMPLETELY REBUILD IT!

**ALL NEW ELECTRONICS!!**



**You Tube**



WP - Tewimat S - Food Makers Bakery Equipment

VISIT OUR YOUTUBE VIDEOS FOR MORE INFORMATION @ [YOUTUBE.COM/FMBE](https://www.youtube.com/fmbe)

**WE ARE THE BEST AT WHAT WE DO!  
CALL US FOR A QUOTE TODAY!**

**Food Makers Bakery Equipment • 626-358 - 1343 • [www.FMBE.com](http://www.FMBE.com) • [sales@fmbe.com](mailto:sales@fmbe.com)**

**FOOD MAKERS  
BAKERY EQUIPMENT**

**FMBE.com**

**FOOD MAKERS  
BAKERY EQUIPMENT**

**FMBE.com**

**ROLL MACHINES  
REMANUFACTURED**



# DEPOSITORS

## REMANUFACTURED

**CHAMPION**  
Cookie Depositor



**HINDS-BOCK**  
5 Piston



**RADEMAKER**  
80MM



**MAGNA**  
Cookie Depositor



**POLIN**  
Multi-Drop

**OLIVER**  
Gravity Feed



# SLICERS

## REMANUFACTURED

**ALTO**  
Bun Slicer



**OMEGA**  
Cake Slicer



- WE HAVE A WIDE SELECTION OF MACHINES TO FIT YOUR BUDGET AND PRODUCTION REQUIREMENTS
  - SEE OUR WEBSITE FOR MORE INFORMATION
- EXPERTS AT REBUILDING ALL: OLIVER, UBE, AMF, BERKEL AND JAC MODELS
  - HAVE A FAVORITE MACHINE? WE CAN COMPLETELY REBUILD IT!

**JAC**  
Automatic  
Slicer



**GROTE**  
Multibread Slicer



**You Tube**



WP - Tewimat S - Food Makers Bakery Equipment

VISIT OUR YOUTUBE VIDEOS FOR MORE INFORMATION @ [YOUTUBE.COM/FMBE](https://www.youtube.com/fmbe)



# DIVIDERS

## REMANUFACTURED

**BENIER  
B-93**



**KEMPER  
Consult-ET**



**BERTRAND  
20 Part Divider**



- WE HAVE A WIDE SELECTION OF MACHINES TO FIT YOUR BUDGET AND PRODUCTION REQUIREMENTS
- SEE OUR WEBSITE FOR MORE INFORMATION

**SUBAL  
Divider**



**WP  
Haton Divider**



**KEMPER  
Mini Quadro  
Divider Rounder**



# SHEETERS

## REMANUFACTURED

**RONDO  
Tabletop  
Sheeter**



**RONDO  
Reversible  
Sheeter**



**BENIER  
Sheeter Moulder**



- EXPERTS AT REBUILDING ALL: BENIER, WP, KEMPER, FORTUNA, AND SOTTORIVA MODELS
- HAVE A FAVORITE MACHINE? WE CAN FULLY REBUILD IT FOR YOU!

**You Tube**



VISIT OUR YOUTUBE VIDEOS FOR MORE INFORMATION @ [YOUTUBE.COM/FMBE](https://www.youtube.com/fmbe)

**LBC  
Pizza Sheeter**



**SOMERSET  
Dough & Fondant  
Sheeter**





# MOULDERS

**REMANUFACTURED**



**STICKELBER**  
Moulder Sheeter



**ACME**  
Moulder



**BENIER**  
BO88 Moulder



**OLIVER**  
Baguette  
Moulder



**LUCKS**  
Moulder



**KEMPER**  
Moulder

- WE HAVE A WIDE SELECTION OF MACHINES TO FIT YOUR BUDGET AND PRODUCTION REQUIREMENTS
- SEE OUR WEBSITE FOR MORE INFORMATION

# ROUNDERS

**REMANUFACTURED**



**LUCKS**  
Automatic Divider  
Rounder



**RONDO**  
Manual Rounder



**KEMPER**  
Conical  
Rounder



**KEMPER**  
Cylindrical  
Rounder

- EXPERTS AT REBUILDING ALL: LUCKS, ERIKA RECORD, KEMPER, RONDO AND SOTTORIVA MODELS
- HAVE A FAVORITE MACHINE? WE CAN COMPLETELY REBUILD IT!

**You Tube**



VISIT OUR YOUTUBE VIDEOS FOR MORE INFORMATION @ [YOUTUBE.COM/FMBE](https://www.youtube.com/fmbe)



**ERIKA RECORD**  
Divider Rounder





# SERVICES

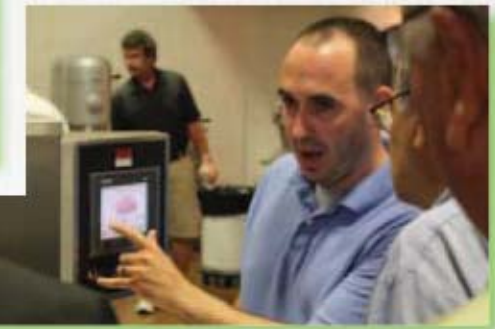
**FOOD MAKERS  
BAKERY EQUIPMENT**

**FMBE.com**

• **COMPLETE  
INSTALL  
SERVICES**



• **ON-SITE  
TRAINING**



• **SCHEDULED  
MAINTENANCE  
SERVICES**



**THE ONLY FULLY STAFFED  
SERVICE DEPARTMENT  
IN THE WEST**

**FULL OFFICE  
SUPPORT**

**\* HERE WHEN YOU NEED IT \***



**OUR SERVICE FLEET OF FIELD TECHNICIANS  
HAVE A COMBINED 200 YEARS OF EXPERIENCE**



**LOCAL SERVICE AREA**

- **WE COME TO YOUR FRONT  
DOOR STEP**
- **WE SERVICE OUTSIDE THE  
U.S. AS WELL**
- **WE SPECIALIZE IN BAKERY  
EQUIPMENT REPAIR  
SINCE 1984**

**FOOD MAKERS  
BAKERY EQUIPMENT**  
**FMBE.com**

**Food Makers Bakery Equipment • 626-358 - 1343 • www.FMBE.com • sales@fmbe.com**

**FOOD MAKERS  
BAKERY EQUIPMENT**  
**FMBE.com**

**SERVICES**





**PARTS**

**OVER 40 THOUSAND PARTS IN STOCK!**



**LARGEST  
IN-STOCK PARTS IN THE USA!**

**ORDER **ONLINE** OR  
**CALL** OUR FRIENDLY TECH SALES ADVISORS**



Food Makers Bakery Equipment • 626-358 - 1343 • [www.FMBE.com](http://www.FMBE.com) • [sales@fmbe.com](mailto:sales@fmbe.com)



**PARTS**

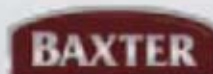




**WE CARRY ALL PARTS  
FOR ALL  
BAKERY MACHINES**

**ORDER ONLINE  
OR**

**CALL US TO PLACE ORDER!**





# MANUFACTURING

**IN-HOUSE**



**OPTIONAL:  
DOUBLE WELD  
STRENGTH**



**WE CUSTOM BUILT ALL TYPES  
OF ALUMINUM AND STAINLESS  
PRODUCTS TO FIT YOUR NEEDS**

**INDUSTRIAL  
CASTERS**



**WE CAN BUILD ANYTHING YOU IMAGINE**



**DON'T BUY  
CHEAP, FLIMSY  
CHINESE IMPORTS!**



**OUR BASEPLATE**



**WON'T BREAK UNDER LOAD**

**MANUFACTURING**

**IN-HOUSE**



**Food Makers Bakery Equipment • 626-358 - 1343 • [www.FMBE.com](http://www.FMBE.com) • [sales@fmbe.com](mailto:sales@fmbe.com)**





**IN-HOUSE MANUFACTURING**



## COVERED PROOFING

- Protects Top Pans From Condensation & Contamination



## STAINLESS PAN RACK

- Custom Slide Spacing
- 5" x 2" Industrial Casters



## COOKIE RACK

- 40 Pans In Less Space

**DOWNLOAD OUR  
SALE FLYER TODAY  
@ [FMBE.COM](http://FMBE.COM)**

## OUR GUARANTEE

**"ONCE YOU BUY OUR PROUDUCTS...WE  
GUARANTEE YOU WILL NEVER CONSIDER ANY  
OTHER MANUFACTURER!"**

**DOWNLOAD OUR SALE FLYER TODAY @ [FMBE.COM](http://FMBE.COM)**



## SPECIALTY OVEN RACKS

- Greater Air-Flow Offers Decreased Bake Time



## NESTING RACKS

- Nest Together For Easy Storage
- Maximum Production Floor Space



## CUSTOM RACKS

- Fully Customizing Available For All Our Manufactured Products



## TRANSIT CABINETS

- Durable Pan Storage And Transport
- Reinforced Design Along With Secure Latch
- Thicker Doors

**SEE ALL OUR  
PRICING ONLINE  
@ [FMBE.COM](http://FMBE.COM)**





**ST-3672-2**  
• Open Base



**STS-182020-2-M**



**WTS-3696-2**  
• Dual Open Shelf Maple Top



**DOWNLOAD OUR  
SALE FLYER TODAY  
@ FMBE.COM**



**ST25D**  
• Three Shelf W/ Drawer

## OUR GUARANTEE

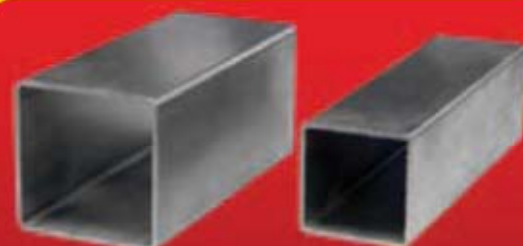
**"ONCE YOU BUY OUR PROUDUCTS...WE  
GUARANTEE YOU WILL NEVER CONSIDER ANY  
OTHER MANUFACTURER!"**

**DOWNLOAD OUR SALE FLYER TODAY @ FMBE.COM**



**WTSFM-3072**  
• Open Shelf Maple Top  
• Dual Drawers w/ Locking Casters

### COMPARE THE DIFFERENCE



**OUR 2"  
TUBE**

**THEIR 1"  
TUBE**



**STOS-3696-2 Scaling Bench**  
• Custom To Your Specs



**STM2D-3672**  
• Open Shelf Stainless Top  
• Dual Drawers w/ Locking Casters

**SEE ALL OUR  
PRICING ONLINE  
@ FMBE.COM**



**BAGUETTE PAN DOLLY WITH SIDE WALLS**

- Keep Non-Nesting Boards & Pans Stacked



**DOUBLE SHEET PAN DOLLY WITH HANDLES**

- Can Support Up To 480 Sheet Pans
- Heavy Duty Construction

**SHEET PAN DOLLY WITH HANDLES**

- 3000 Lbs. Weight Capacity



- Smooth Rolling Industrial Casters
- Custom Sizes



**OUR GUARANTEE**

**"ONCE YOU BUY OUR PROUDUCTS...WE GUARANTEE YOU WILL NEVER CONSIDER ANY OTHER MANUFACTURER!"**

**DOWNLOAD OUR SALE FLYER TODAY @ FMBE.COM**



**CUSTOM CARTS**

- 4 Tier Levels
- Smooth And Quiet Rubber Casters
- Custom Sizes



**PANNING CART**

- Welded Handle For Greater Maneuvering
- Stack Pans On 2 Tiers



**STAINLESS STEEL SUPER PAN DOLLY**

- 3000 Lbs. Weight Capacity
- Fully Customized

**SEE ALL OUR PRICING ONLINE @ FMBE.COM**



# FMBE CARTS

**IN-HOUSE MANUFACTURING**

## DOUGH BIN CART

- NSF Listed Non Rusting Polyethylene Bin
- Sanitary Design



**FOOD MAKERS  
BAKERY EQUIPMENT**

**FMBE.com**



## STAINLESS DUNNAGE RACK

- Adjustable Foot Inserts
- 2" Tubing Allows Incredible Weight Support
- Guaranteed To Never Sag

**DOWNLOAD OUR  
SALE FLYER TODAY  
@ FMBE.COM**



## 3 COMPARTMENT

- Sanitary Design
- Sturdy Stainless Lids

## OUR GUARANTEE

**"ONCE YOU BUY OUR PROUDUCTS...WE  
GUARANTEE YOU WILL NEVER CONSIDER ANY  
OTHER MANUFACTURER!"**

**DOWNLOAD OUR SALE FLYER TODAY @ FMBE.COM**



## STAINLESS BREAD STRAP CART

- Reinforced Welded Handle
- 5000 Lbs. Weight Capacity With 8" Casters



## MOBILE MIXER STAND WITH STORAGE

- 3000 Lbs. Weight Capacity
- Fully Customized



## TOOL CART WITH SLIDES

- 4 Sided  
Splash Panels



## STAINLESS FLAT BED UTILITY CART

- Reinforced Welded Handle
- 5000 Lbs. Weight Capacity With 8" Casters

**SEE ALL OUR  
PRICING ONLINE  
@ FMBE.COM**

**FMBE CARTS  
IN-HOUSE MANUFACTURING**

**FOOD MAKERS  
BAKERY EQUIPMENT**  
FMBE.com

**Food Makers Bakery Equipment • 626-358 - 1343 • www.FMBE.com • sales@fmbe.com**

**FOOD MAKERS  
BAKERY EQUIPMENT**  
FMBE.com